

# ROSALIE

Combining comfort, practicality and a range of leg designs, ROSALIE is perfect for restaurant, training, visitor reception, meeting and brainstorming spaces. Supporting a bright yellow finish, Rosalie offers the opportunity to adopt a 'pop art' styling that will inspire creativity and exchanges.



4 metal legs Sled base

- ROSALIE bench units, page 33
- Multi-purpose tables, page 177



## Fun & versatile



Comfortable and  
enveloping seat

Optional cushion pad:  
and added touch of  
colour and comfort

Easy-clean  
(polypropylene seat shell)

Grab handle built into  
the base of the seat

### IN FOCUS



Hand lever for adjusting seat height  
Conference chair base: + 13 cm  
Castor-mounted chair base: + 12.5 cm



Optional  
writing shelf on right-hand side



## ROSALIE, CAMPUS version

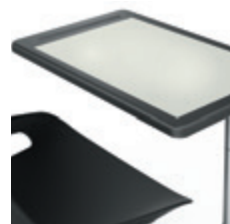
The CAMPUS version of the chair is specially conceived for brainstorming, training or project work activities... Its centred base mounted on castors, writing shelf and storage basket are highlights of a flexible, functional and modern design.



### IN FOCUS



Integrated storage space



360° rotatable writing shelf  
for left or right-handed users

# PRICES

Price excl. taxes: **From stock** **On request**

## 4 LEG CHAIRS

	Chrome metal legs		Black metal legs		Beech wood legs	
	Ref.	Price excl. tax	Ref.	Price excl. tax	Ref.	Price excl. tax
Without cushion pad	5 620 001 + col. + SQ	£ 88	5 620 001 + col. + SG	£ 88	5 620 003 + col. + XL	£ 184
With cushion pad (Cat. A)	5 620 002 + col. + SQ + fab.	£ 130	5 620 002 + col. + SG + fab.	£ 130	5 620 004 + col. + XL + fab.	£ 226
Linking piece for 4 metal legs (to connect 10 chairs order 9 sets of linking pieces)			5 620 018	£ 11		

## SLED BASE CHAIR

	without writing shelf		Writing shelf on right-hand side	
Without cushion pad	5 620 005 + col. + SQ	£ 102	5 620 019 + col. + SQ	£ 143
With cushion pad (Cat. A)	5 620 006 + col. + SQ + fab.	£ 143	5 620 020 + col. + SQ + fab.	£ 185
Linking pieces kit for sled base chairs (for 11 chairs)	5 620 017	£ 44	To specify a writing shelf on the left-hand side: contact us.	

## CONFERENCE CHAIR BASE

	Castor-mounted legs		Cruciform base	
Without cushion pad	5 620 011 + col. + SQ	£ 217	5 620 009 + col. + SQ	£ 217
With cushion pad (Cat. A)	5 620 012 + col. + SQ + fab.	£ 259	5 620 010 + col. + SQ + fab.	£ 259
Set of 5 castors for hard floors	5 643 020	£ 13		

## HIGH STOOL

	HIGH STOOL		CAMPUS (sold in sets of 2)	
Without cushion pad	5 620 013 + col. + SQ	£ 153	5 620 015 + col. + PH	£ 611 <small>Unit price: £ 305,5</small>
With cushion pad (Cat. A)	5 620 014 + col. + SQ + fab.	£ 194	5 620 016 + col. + PH + fab.	£ 694 <small>Unit price: £ 347</small>

## FINISHES

4 choices of chair colour (except CAMPUS) (+ col.)				4 choices of CAMPUS chair colour (+ col.)				3 choices of cushion pad fabric shade card (+ fab.)			2 choices of finish for legs (+ fin.)	
PQ	PJ	PS	PR	PR	PJ	PQ	PS	Xtreme CS Cat. B fabrics	Ginkgo Cat. C fabrics	Blazer Cat. D fabrics	SQ	SG
Grey	Yellow	White	Black brown	Black brown	Yellow	Grey	White				Chrome	Black
FROM STOCK				ON REQUEST				FROM STOCK			ON REQUEST	

ON REQUEST: allow 4 weeks