

## ✓ Functional & Diverse

ARMAND is a practical range of storage furniture with a carefully considered design that helps optimise the organisation of workstations and the structuring of workspaces. Supported by an extensive selection of finishes and a comprehensive colour palette, ARMAND is a truly ultra-customisable furniture range.

Enhance executive spaces



### SWING DOOR CUPBOARDS

Retail prices in £ excl. tax



#### H. 73.5 cm - 1 shelf - Accommodates 2 lever arch files

2 melamine doors  
2 glass doors

#### Width 80 cm

2 424 001 + fin. + deco **246**  
2 424 002 + fin. + col. **371**

#### Width 100 cm

2 424 030 + fin. + deco **284**



#### H. 113.5 cm - 2 shelves - Accommodates 3 stacked lever arch files

2 melamine doors

2424005 + fin. + deco **313**

2 424 032 + fin. + deco **360**



#### H. 133.5 cm - 3 shelves - Accommodates 4 stacked lever arch files

2 melamine doors  
2 glass doors

2 424 006 + fin. + deco **379**  
2 424 007 + fin. + col. **518**

2 424 033 + fin. + deco **422**

#### H. 202.1 mm - 4 shelves - Accommodates 5 stacked lever arch files

2 melamine doors  
4 melamine doors \*  
1/3 melamine doors - 2/3 glass doors  
4 glass doors \*

2 424 008 + fin. + deco **470**  
2 424 009 + fin. + deco **561**  
2 424 019 + fin. + deco + col. **664**  
2 424 010 + fin. + col. **831**

2 424 034 + fin. + deco **541**

### CUPBOARDS WITH SLIDING DOORS



#### H. 73.5 cm - 1 shelf - Accommodates 1 lever arch file height

2 melamine sliding doors

#### Width 100 cm

2 425 080 + fin. + deco **474**

#### Width 120 cm

2 425 090 + fin. + deco **522**

#### H. 113.5 cm - 2 shelves - Accommodates 2 stacked lever arch files

2 melamine sliding doors

2 425 082 + fin. + deco **550**

2 425 092 + fin. + deco **626**

#### H. 133.5 cm - 3 shelves - Accommodates 3 stacked lever arch files

2 melamine sliding doors


2 425 083 + fin. + deco **617**

2 425 093 + fin. + deco **712**



## BOOKCASE

	Width 80 cm	Width 100 cm	
	<b>H. 73.5 cm - 1 shelf - Accommodates 2 lever arch files</b> Without doors + choice of decorative top	2 424 011 + fin. + deco <b>151</b>	2 424 035 + fin. + deco <b>170</b>
	<b>H. 113.5 cm - 2 shelves - Accommodates 3 stacked lever arch files</b> Without doors	2 424 012 + fin. <b>199</b>	2 424 036 + fin. <b>227</b>
	<b>H. 133.5 cm - 3 shelves - Accommodates 4 stacked lever arch files</b> Without doors	2 424 013 + fin. <b>256</b>	2 424 037 + fin. <b>284</b>
	1/2 melamine doors - 1/2 open without doors	2 424 014 + fin. + deco <b>360</b>	2 424 038 + fin. + deco <b>404</b>
	1/2 glass doors - 1/2 open without doors	2 424 015 + fin. + deco + col. <b>499</b>	
	<b>H. 202.1 cm - 4 shelves - Accommodates 5 stacked lever arch files</b> Without doors	2 424 016 + fin. <b>295</b>	2 424 039 + fin. <b>337</b>
	1/3 melamine doors - 2/3 open without doors	2 424 017 + fin. + deco <b>398</b>	2 424 040 + fin. + deco <b>455</b>
	1/3 glass doors - 2/3 open without doors	2 424 018 + fin. + col. <b>522</b>	


## WARDROBE UNIT

	Width 80 cm	
	<b>H. 202.1 cm - 4 shelves - Accommodates 5 stacked lever arch files</b> 2 melamine doors	2 424 020 + fin. + deco <b>569</b>


## DESK-HEIGHT CUPBOARDS

	Width 80 cm	Width 100 cm	
	<b>H. 73.5 cm - 1 shelf - Accommodates 2 lever arch files</b> 2 melamine doors + decorative top in matching finish to doors	2 424 003 + fin. + deco <b>251</b>	2 424 031 + fin. + deco <b>289</b>
	2 glass doors + choice of decorative top	2 424 004 + fin. + deco + col. <b>375</b>	
	<b>H. 73.5 cm - 1 shelf - Accommodates 2 lever arch files</b> Without doors + choice of decorative top	2 424 011 + fin. + deco <b>151</b>	2 424 035 + fin. + deco <b>170</b>
	<b>H. 73.5 cm - 1 shelf - Accommodates 2 lever arch files</b> 2 drawers for suspension files + decorative top in matching finish to doors	2 424 022 + fin. + deco <b>518</b>	
	Width 100 cm	Width 120 cm	
	<b>H. 73.5 cm - 1 shelf - Accommodates 1 lever arch file height</b> 2 melamine sliding doors + decorative top in matching finish to doors	2 425 081 + fin. + deco <b>479</b>	2 425 091 + fin. + deco <b>526</b>

## PARTITIONING COUNTER-HEIGHT UNIT

	Width 165 cm	
	<b>H. 113.5 cm - 2 shelves - Accommodates 3 stacked lever arch files</b> Module with melamine doors H. 71 cm + Module with Altuglas® doors H. 42.5 cm	2 425 001 + fin. + deco + col. <b>1107</b>
	<b>H. 156 cm - 3 shelves - Accommodates 4 stacked lever arch files</b> Module with melamine doors H. 113.5 cm + Module with Altuglas® doors H. 42.5 cm	2 425 002 + fin. + deco + col. <b>1207</b>

## LOW UNITS

	<b>H. 55.2 cm - Accommodates 1 lever arch file height</b> On feet with 2 Altuglas® doors	Width 100 cm	2 425 084 + fin. + col. <b>474</b>
		Width 120 cm	2 425 094 + fin. + col. <b>522</b>
		Width 165 cm	2 425 003 + fin. + col. <b>594</b>

## REFRIGERATED UNIT

	Width 80 cm	
	<b>H. 73.5 cm</b> 2 glass doors*	2 424 023 + fin. + col. <b>945</b>

## DRAWER CREDENZA

	Width 80 cm	
	<b>H. 73.5 cm - 1 shelf - Accommodates 2 lever arch files</b> 2 susp. file drawers	2 424 021 + fin. + deco <b>513</b>

OPTIONS

Shelves for swing door cupboard and bookcase units



Metal shelf for suspension files \*  
Melamine shelf

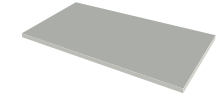
Width 80 cm

2 423 040 + fin. **30**  
2 423 502 + fin. **28**

Width 100 cm

2 423 557 + fin. **48**  
2 423 612 #+ fin. **33**

Shelves for sliding door cupboards



Metal shelf  
Melamine shelf

Width 100 cm

2 425 053 + fin. **33**

Width 120 cm

2 425 066 + fin. **52**

Shelf for partitioning counter-height unit

For unit W. 165, requires 2 shelves W. 80 cm

Metal shelf for suspension files  
Melamine shelf

Width 80 cm

1 067 730 SA **43**  
1 067 730 + fin. **38**

Oversize decorative top (connecting / spanning 2 to 3 cupboards)



Melamine decorative top

Width 160 cm	2 423 574 + deco	<b>52</b>
Width 200 cm	2 423 575 + deco	<b>67</b>
Width 240 cm	2 423 576 + deco	<b>81</b>

Fabric cushion pad for low unit



Attach by means of velcro pads. 53 x 43 cm

2 301 044 + fab. **81**

Telescopic cradle



For units W. 80 cm

2 423 477 SG **157**

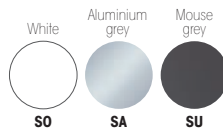
Choice of cupboard shell and melamine shelves finish (+ fin.)



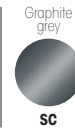
On request (allow 5 weeks)



Choice of metal shelf finish (+ fin)



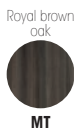
On request (allow 5 weeks)



Choice of door (and decorative top finish <sup>(1)</sup>) (+ deco)

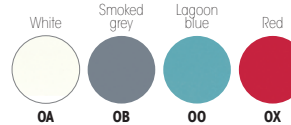


On request (allow 5 weeks)



<sup>(1)</sup> \* choice of finish available for desk height cupboards only.  
<sup>(2)</sup> only for units W. 165 cm

Choice of Altuglas® sliding door colour (+ col.)



Choice of enamelled glass colour (+ col.)



Choice of Bondai cat. A fabric colours (+ fab.)



Choice of Xtreme CS cat. B M1 fire-resistant fabrics (+ fab.)

